

Control Panel

ADMINUX®

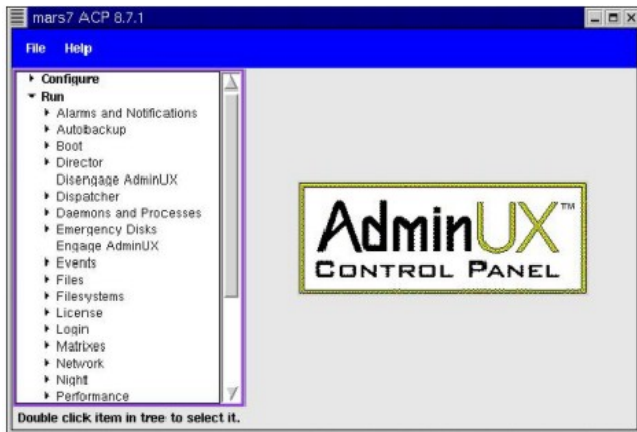
AdminUX is designed to be configured and run from a command-line prompt, which makes it ideal for remote systems that may only provide telnet access.

The ACP provides the same functionality as the AdminUX Shell and the cross-platform AdminUX command line scripts in an easy-to-use graphical format.

The AdminUX Control Panel uses a familiar hierarchical tree structure to present the available configuration and run options.

Using this familiar format and placing all configurable elements in the tree can reduce training time needed for less experienced administrators.

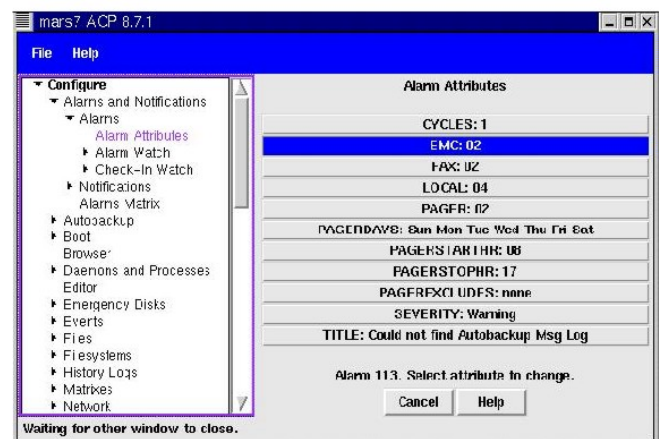
In remote administration situations the AdminUX Control Panel will allow Help Desk personnel to assist remote users in making changes to the operational parameters of AdminUX, or easily execute AdminUX run procedures.



When an X-window session is available the Adminux Control Panel (ACP), a self-contained Tcl/Tk application, proves an easy-to-use, tree-based point-and-click menu enabling anyone with proper access to quickly and easily modify AdminUX's default policies.

In keeping with the AdminUX philosophy of using familiar and easy to understand scripting languages, the ACP is a Tcl/Tk component that operates under virtually any window manager supported by the X-window system.

The ACP provides two sections: a **Configuration** section where an authorized user can easily change AdminUX's operational parameters, and a **Run** section where AdminUX procedures can be executed immediately.



www.adminux.com

Rev. B - Green Light Advantage, LLC/ P.O. Box 920639 / Norcross, GA 30010-0639 / Toll Free 888-750-6033

©2003 Green Light Advantage, LLC. AdminUX® (patents pending) is a registered trademark of Green Light Advantage, LLC.